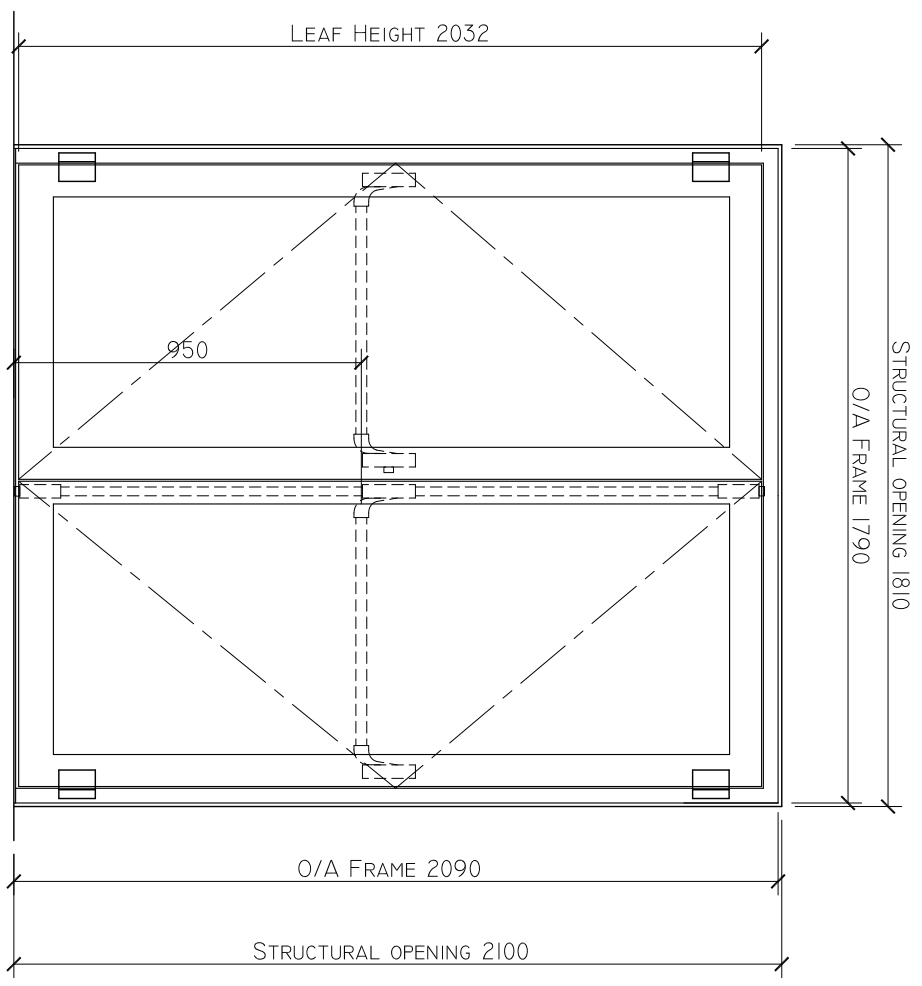
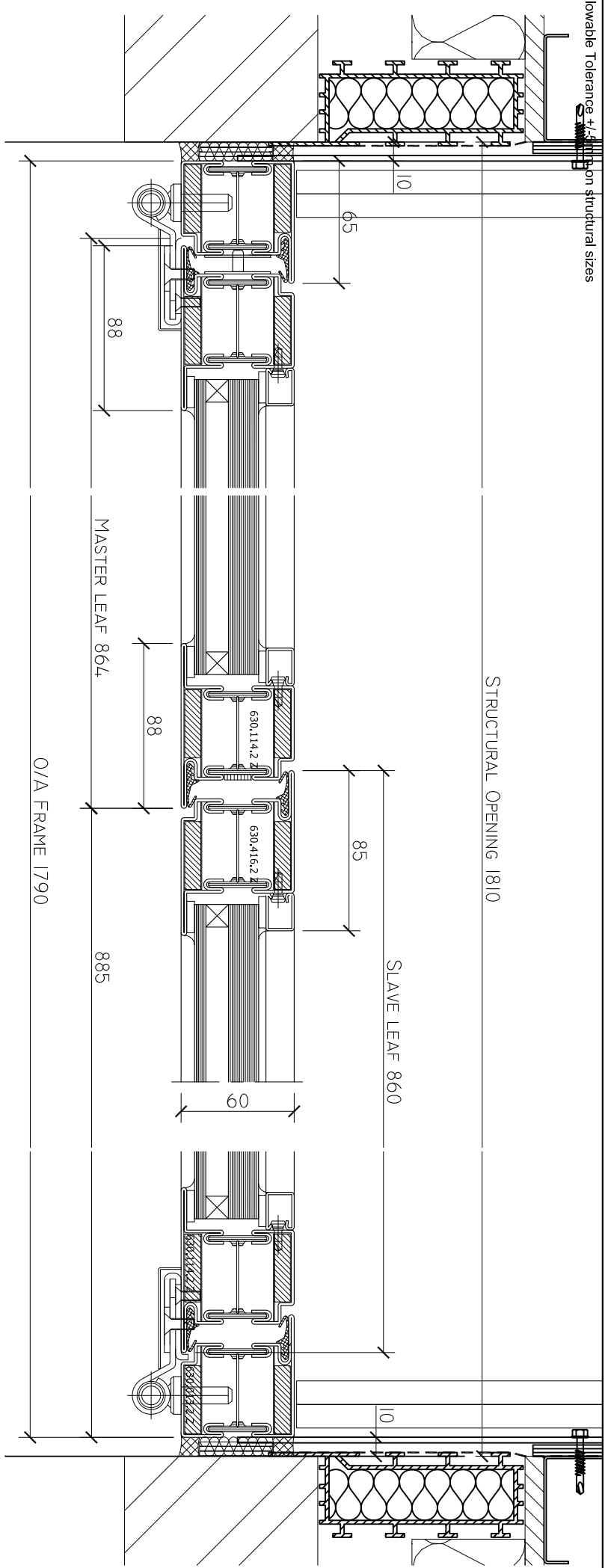


Allowable Tolerance +/- 5mm on structural sizes



**Notes**

ALL SCREENS TO BE FIXED INTO A SUITABLE FIRE RATED STRUCTURE.

GLAZING TO BE PERFORMED WITH FIRE RATED TAPE AND SILICONE CAPPED.

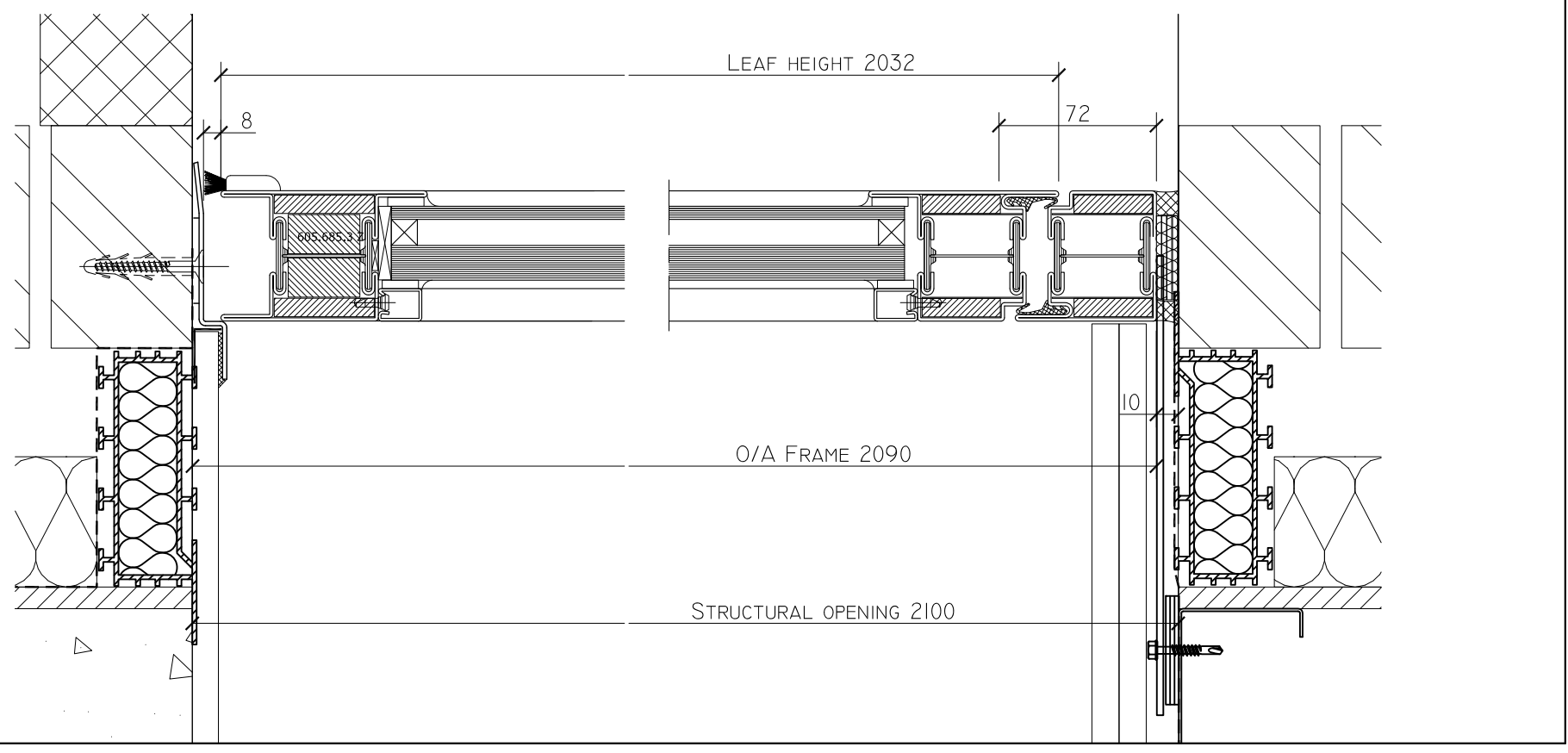
FRAMES TO BE FIXED AT 500MM CENTRES MAXIMUM, WITH ALL METAL FIXINGS.

VOID TO PERIMETER OF FRAMES TO BE FILLED WITH MINERAL WOOL AND POINTED WITH FIRE RATED SILICONE.

WHERE REQUIRED, ALL PACKING SHIMS TO BE FROM GALV. STL.

IF REQUIRED FIXING LUGS TO BE FROM 3MM GALV STEEL

DOOR TO BE FITTED WITH:  
 DORMA TS85 FACE FIXED CLOSERS  
 BOLT ON ADJUSTABLE HINGES WITH SECURITY DOG BOLT  
 DORMA PHA PANIC BAR SYSTEM  
 LOW RAMPED THRESHOLD.



**ARCHITECTURAL PRODUCTS LIMITED**

SPECIALISED ALUMINIUM FABRICATIONS FOR THE CONSTRUCTION INDUSTRY  
 UNIT 9, ALEXANDRA WAY, TEMKESBURY, GLOUCESTERSHIRE GL20 8NB  
 TEL: 01684 291555 FAX: 01684 291666  
 WWW.ARCHITECTURALPRODUCTS.CO.UK

<b>Project:</b>			
Client:			
Revisions			
Date	By		

<b>Specifications:</b> FIRE RATED EI30	
Glass: 34MM DG UNITS TO ACHIEVE EI 30 COMPRISING 18MM PYROSTOP 30-20 12MM SPACER 6MM TOUGHENED SUNCOOL 66/33 PRO-T	
<b>Finish:</b> PPC TO RAL 7015 MATT	

<b>Title:</b> FIRE RATED DOUBLE DOORSET		
Scale: NTS	Date: 14.02.14	Drawing No.
Drawn: JJO	Checked:	